

FIRE LOG PLACEMENT

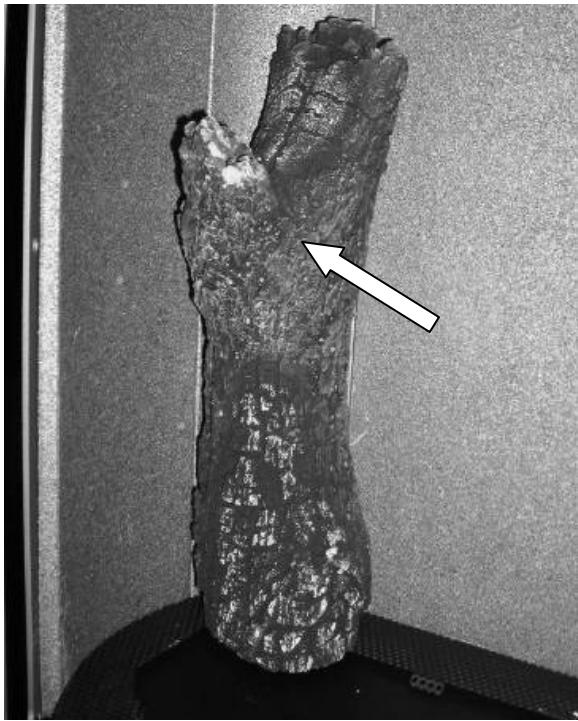
CAUTION: FRAGILE! HANDLE LOG SET WITH CARE. ALWAYS WEAR GLOVES AND SAFETY GOGGLES WHILE HANDLING THE LOG SET.

Place only the Fire log set supplied with the Bari in the firebox. Do not place any other logs, wood logs, or other materials in the firebox. If the log set is damaged or broken contact your dealer for replacement. Only replace the logs with the same approved replacement parts. These components affect the combustion quality and safety of the heater.

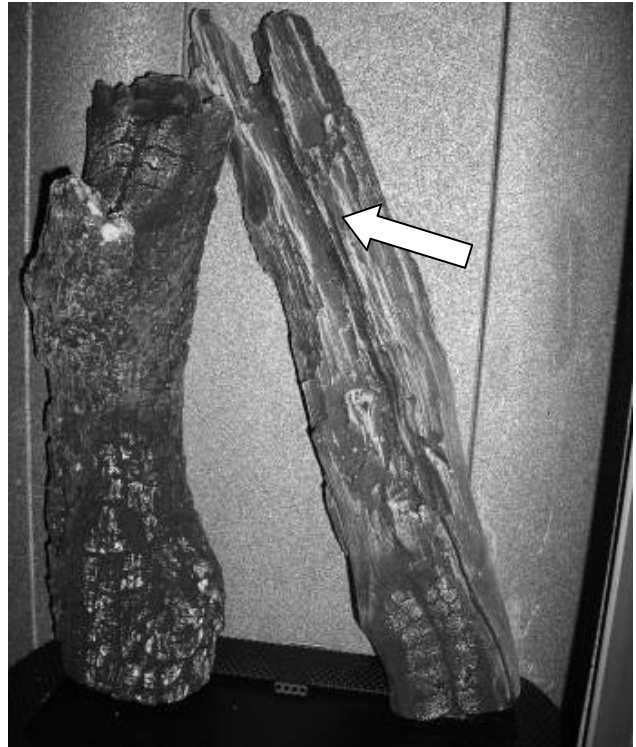
The Fire logs are durable; however, they will break if subjected to rough or improper handling. Exact positioning of the log set is required in order to obtain a pleasing flame pattern and efficient combustion. Incorrect log placement may cause carbon build-up; excess thermal stress on the log set and stove parts, reduced efficiency, and high levels of carbon monoxide. If the log set does not fit into the firebox exactly as outlined, contact your dealer for assistance (see figure 3 for opening the front door).

INSTALLATION OF THE FIRE LOG SET

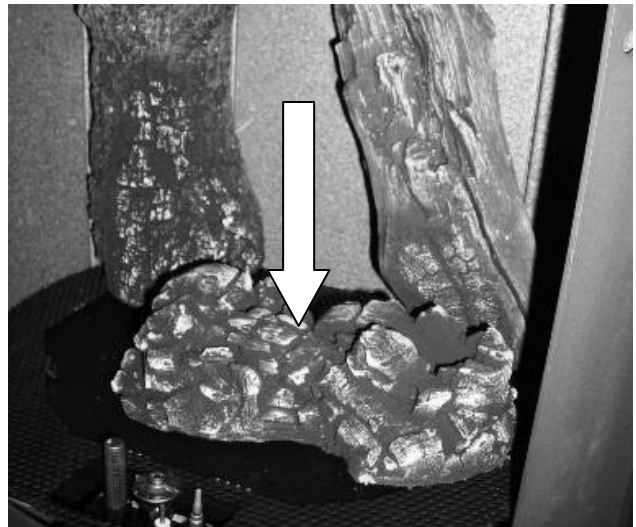
Follow the order of the following photos in order to install the log set:



1. Install the rear left log in the rear left corner.



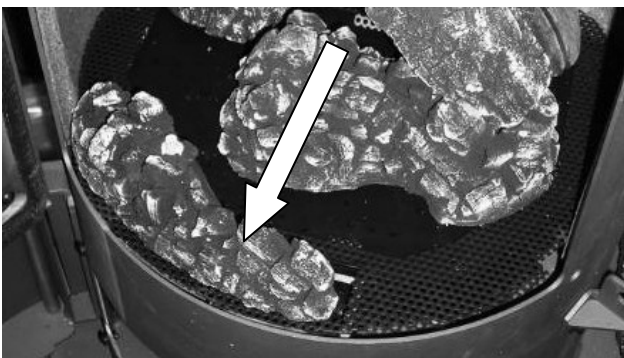
2. Locate and install the rear right log.



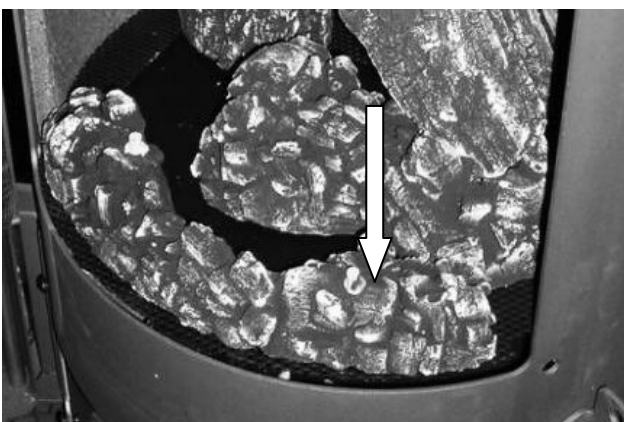
3. Locate and install the ember pile. This will have two holes underneath that fit over two posts in the center of the burner top.



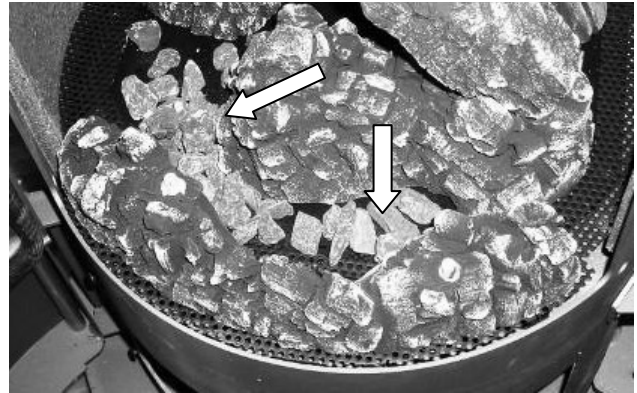
4. Install the Center log. The bottom tip rests in the cradle of the ember pile.



5. Place the left front ember strip in front of the pilot assembly.

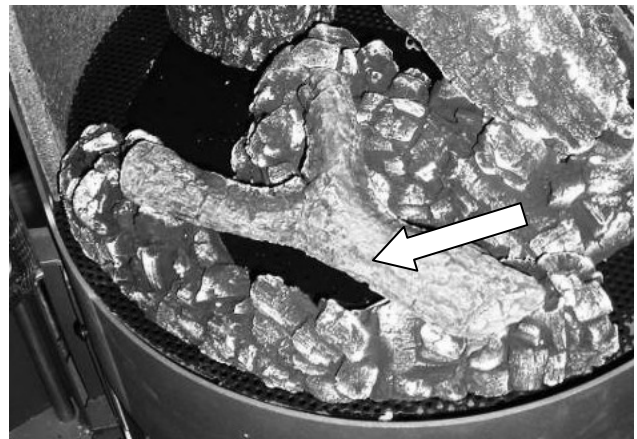


6. Slide the Right front ember strip next to the Left ember strip. The two fit together to hide the seam.



7. Sprinkle the charcoal embers over the burner ports only. Ensure that you leave the ports open over the pilot and where the main burner ignites.

WARNING: DO NOT PLACE ANY CHARCOAL EMBERS OR ROCK WOOL OVER THE BURNER SCREEN!



8. Place the twig as shown.

REMOVAL OF LOG SET

CAUTION: THE FIRE LOG SET RETAINS HEAT AND CAN BE VERY HOT! ALLOW 2 TO 3 HOURS AFTER PILOT LIGHT IS TURNED OFF BEFORE HANDLING.

To remove the Fire log set, follow the Installation of Log Set instructions in the reverse order.